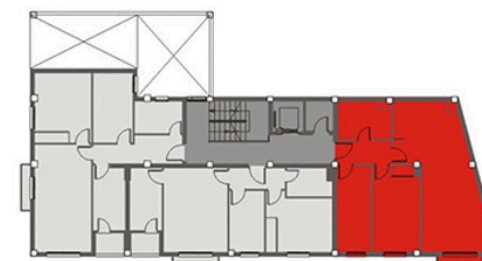
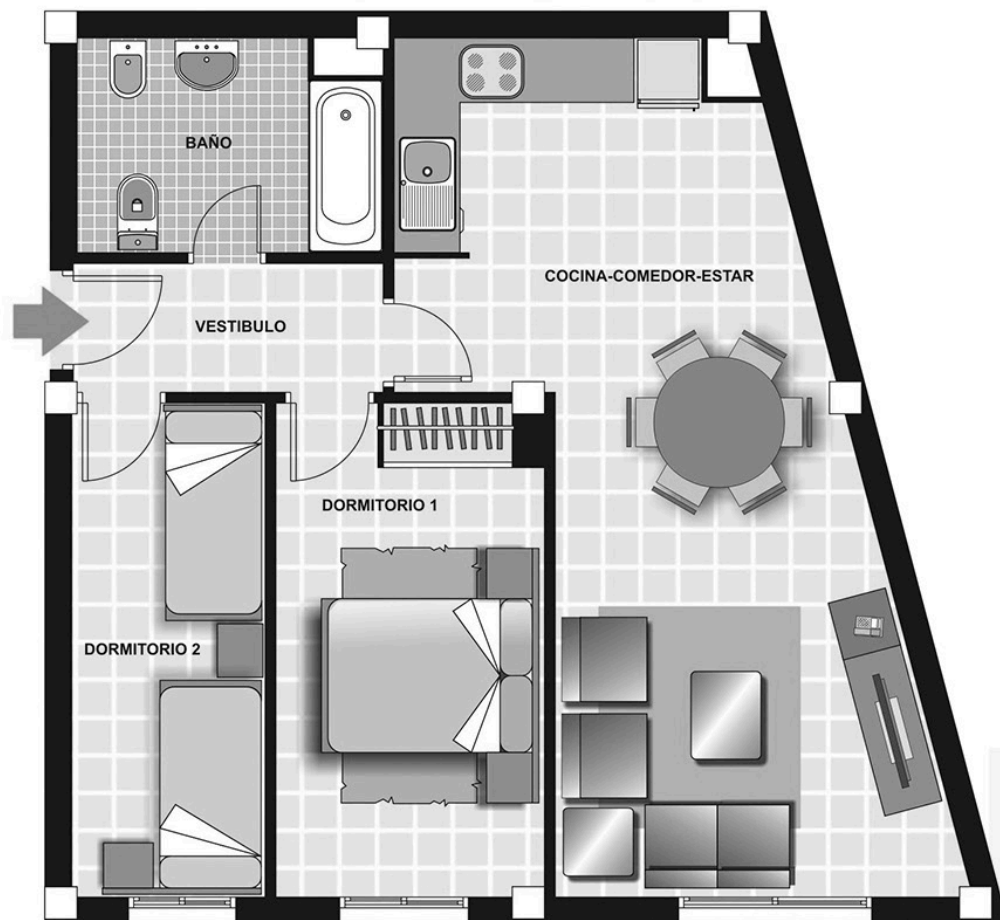


TIPO C · Planta baja



SUPERFICIES (m²)

| | |
|---------------|-------|
| VESTÍBULO | 3,36 |
| COMEDOR-ESTAR | 27,34 |
| DORMITORIO 1 | 11,30 |
| DORMITORIO 2 | 8,18 |
| BAÑO | 5,22 |

| | |
|-------------------|-------|
| SUPERFICIE ÚTIL | 55,40 |
| SUP. CONSTRUIDA | 65,53 |
| PP. ZONAS COMUNES | 16,43 |
| TOTAL. SUP. CONS. | 83,25 |